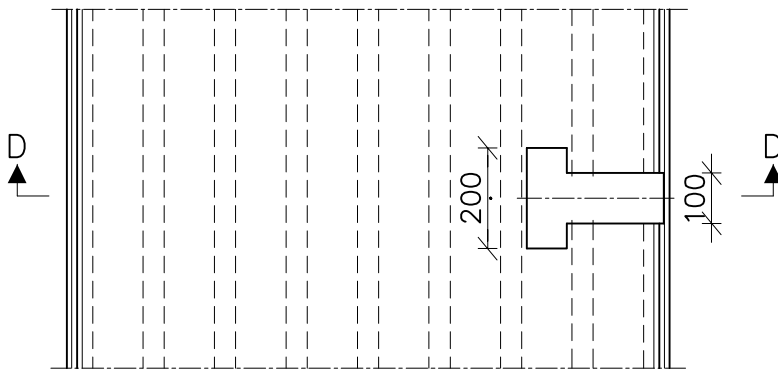
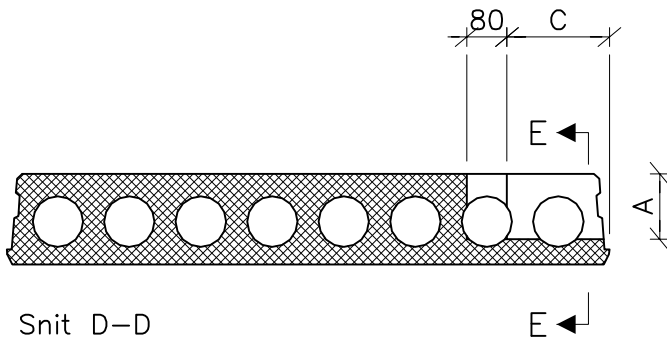


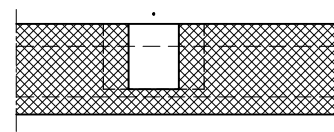
Hammerhovedudsparring placeres normalt pr. 1500 mm.



Set fra oven



Snit D-D



Snit E-E

	EX18	EX22	EX27	EX32	EX40
A	135	155	180	190	190
C	204	275	335	335	335

ij 29.03.08 23.08 INT\_1080-10.dwg

**Spæcom**  
Standard

**EX**  
Hammerhovedudsparring

**INT**  
1080

Tegn.dato:  
03.01.08

Tegn. Godk.  
JJ / LAR

Rev. Dato  
A 29.03.08

Tegn. Godk.  
JJ / LAR

10