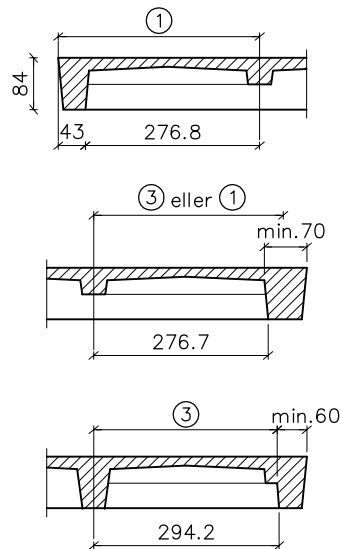


**PASPLADEFORM**

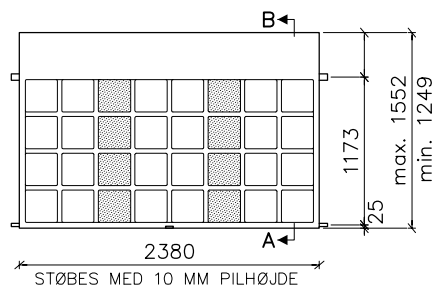
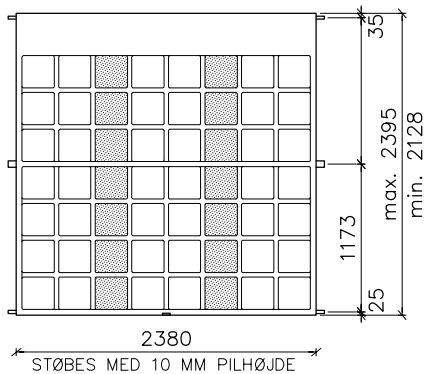


SNIT A

SNIT B

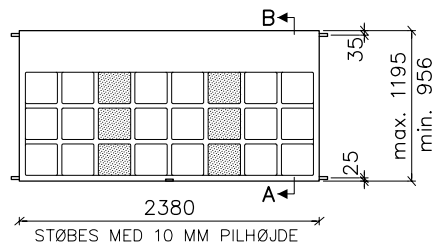
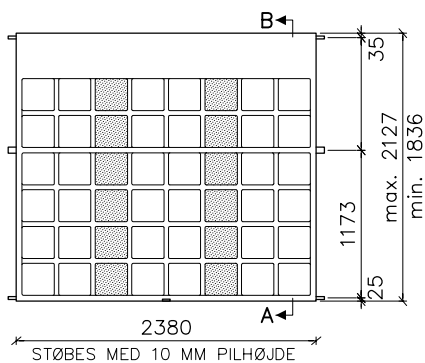
SNIT C

VFA 3.1  
eller  
VBS 3.1



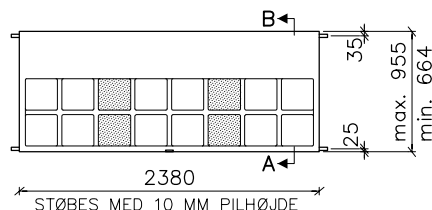
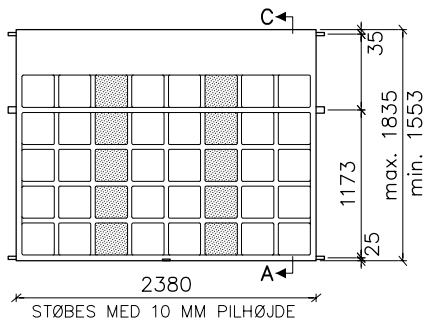
VFA 3.4  
eller  
VBS 3.4

VFA 3.2  
eller  
VBS 3.2



VFA 3.5  
eller  
VBS 3.5

VFA 3.3  
eller  
VBS 3.3



VFA 3.6  
eller  
VBS 3.6

= Pladefelter med øget tykkelse for mekanisk befæstigelse af isolering og tagdækning