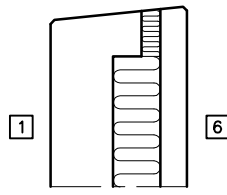
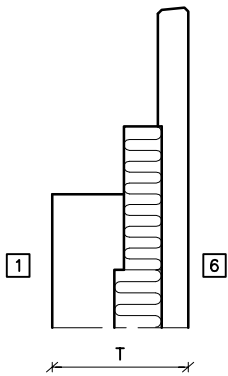


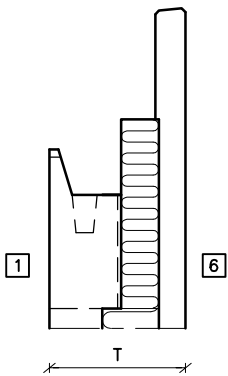
Gavl, isoleret IR
se INT 2 FE



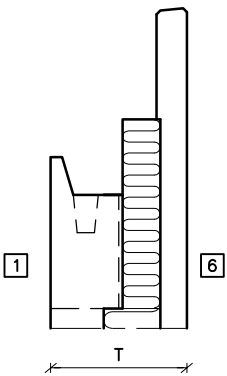
Gavl, afbrudt IG
se INT 2 FE



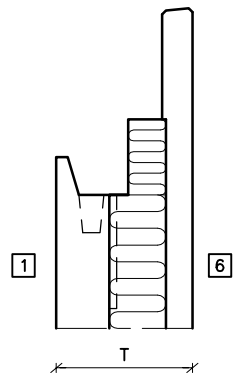
Dækvederlag eller stålstringer IH
se INT 3 FE



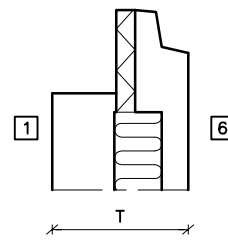
Støbt stringer, TTS-B IK
se INT 4 FE



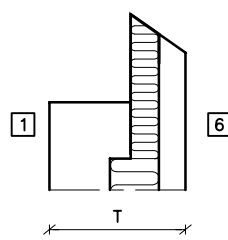
Støbt stringer, TTS-A IL
se INT 4 FE



Støbt stringer, ikke bærende element IM
se INT 3 FE



Boligtóp, uden isolering IO
se INT 10 FE



Boligtóp, med isolering IX
se INT 2 FE